



A graphic scale bar is shown below the map, labeled "GRAPHIC SCALE" and "( IN FEET )". The scale ranges from 0 to 40 feet, with markings every 10 feet. A north arrow is also present, pointing towards the top right of the map.

- (U1) CONNECT TO EXISTING LPG TANK AND/OR INSTALL 1" LPG LINE PER TRENCH DETAIL ON SHEET 2.
- (U2) INSTALL 3" ELECTRICAL CONDUIT WITH 200A MIN. TWO PHASE CABLING AND 3" COMMUNICATION CONDUIT WITH APPROPRIATE CABLING IN SHARED TRENCH PER DETAIL ON SHEET 2.
- (U3) INSTALL 200A ELECTRICAL SERVICE ENTRANCE.
- (U4) CONNECT TO EXISTING ELECTRICAL AND TELEPHONE SERVICE ENTRANCES PER UTILITY OWNER'S REQUIREMENTS.
- (U5) CONNECT TO EXISTING 1" WATER LATERAL.
- (U6) INSTALL 1" SCH 40 PVC WATER LATERAL PER TYPICAL TRENCH DETAIL ON SHEET 2.
- (U7) INSTALL 1" BALL VALVE AND TRAFFIC RATED VALVE BOX.
- (U8) INSTALL 3/4" FREEZE-PROOF YARD HYDRANT ASSEMBLY WITH 1" BALL VALVE AND VALVE COVER, 24" BURY DEPTH, PER DETAIL ON SHEET 2..
- (U9) INSTALL 3/4" DOUBLE CHECK BACK-FLOW PREVENTION DEVICE, 3/4" BALL VALVE, 3 IRRIGATION VALVES, IRRIGATION BOX, 4 PR IRRIGATION CABLE AND 1" CONDUIT TO CONTROLLER.
- (U10) INSTALL 3/4" SCH 40 PVC IRRIGATION PIPE PER TYPICAL TRENCH DETAIL ON SHEET 2.
- (U11) INSTALL 3/4" LANDSCAPE BUBBLERS.
- (U12) INSTALL RAINBIRD 5505 SERIES, OR APPROVED EQUAL, ROTOR SPRINKLER.
- (U13) INSTALL 4 STATION LANDSCAPE CONTROLLER. RAINBIRD ESP-RZX SERIES OR APPROVED EQUAL.
- (U14) INSTALL 6" SDR-35 SEWER PIPE PER TRENCH DETAIL ON SHEET 2.
- (U15) INSTALL 6" SEWER CLEAN OUT WITH TRAFFIC RATED LID PER DETAIL ON SHEET 2.
- (U16) CONNECT TO EXISTING SEWER LATERAL.

1. LOCATIONS OF EXISTING UTILITIES ARE APPROXIMATE. CONTRACTOR TO FIELD VERIFY UTILITY LOCATIONS PRIOR TO CONNECTING TO EXISTING UTILITIES AND INSTALLING NEW UTILITIES.
2. SEE PLUMBING PLAN FOR WATER AND SEWER INSIDE BUILDING.
3. SEWER GRADE SHALL BE NO LESS THAN 2%.

5	Drawing Name: ANIMAL SHELTER 2013.dwg	SHEET <u>4</u> OF <u>9</u>
---	--	----------------------------

FOR REDUCED PLANS  
ORIGINAL SCALE IS IN INCHES

Revised By:
Date:

Project Engineer:	JTATUM
-------------------	--------

Checked By:	JAHSTROM
-------------	----------

**Date:**  
**MAY 2014**

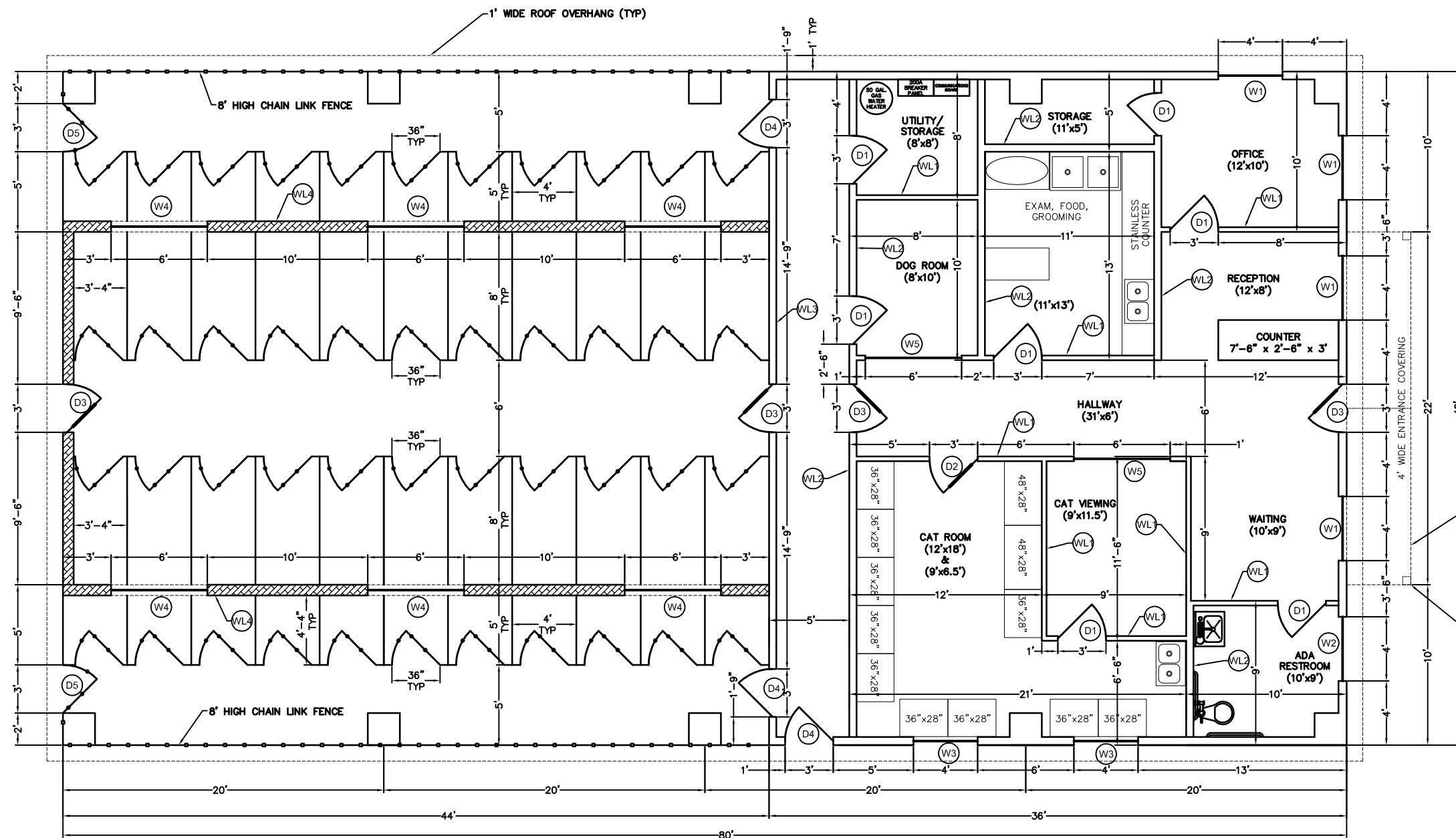
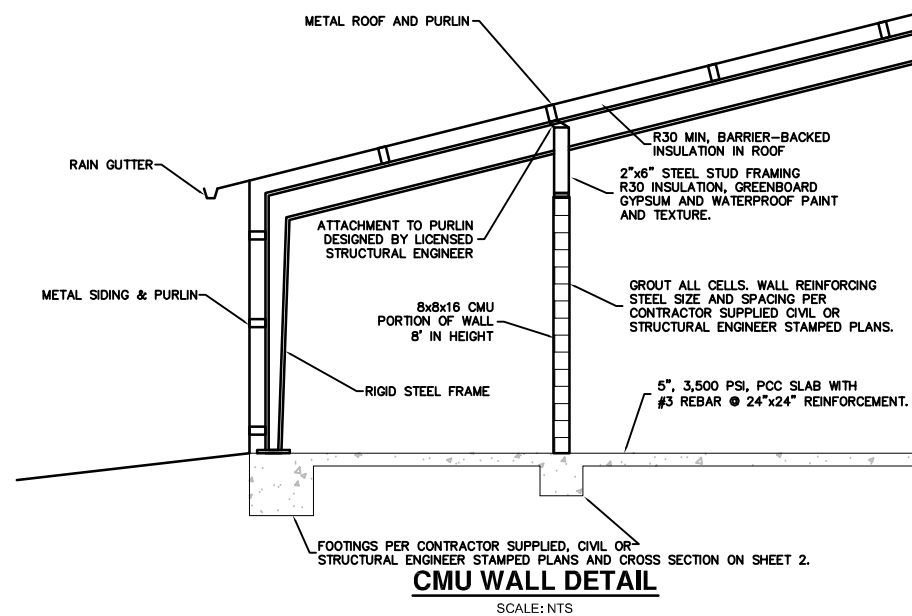
4	Designed by: JJEROPKIN
---	---------------------------

Drawn by:  
JJEROPKIN

Date:  
MAY 2015

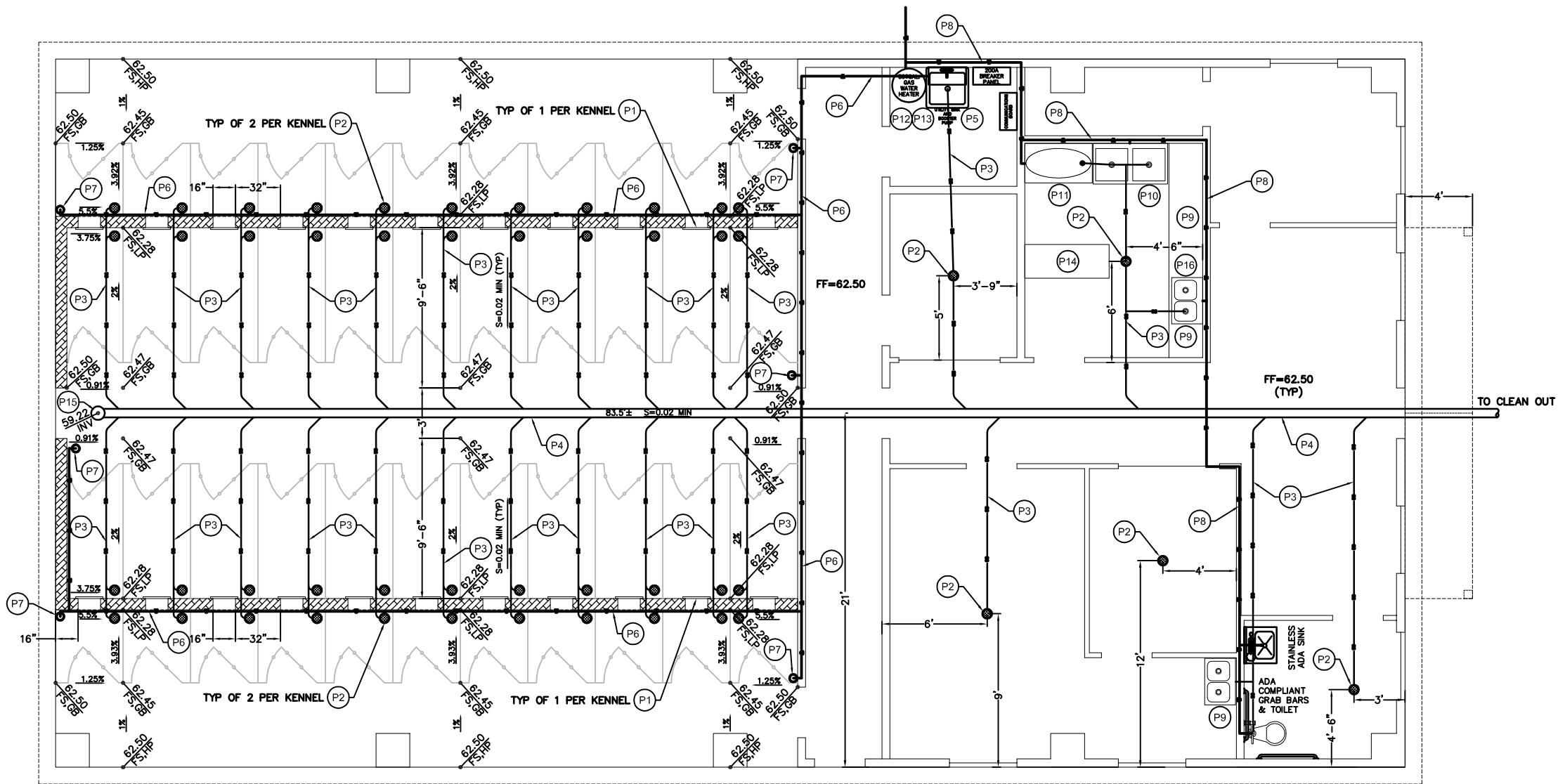
Drawing Name:  
5 ANIMAL SHELTER 2013.dwg

SHEET 4 OF 9

SHEET 5 OF 9

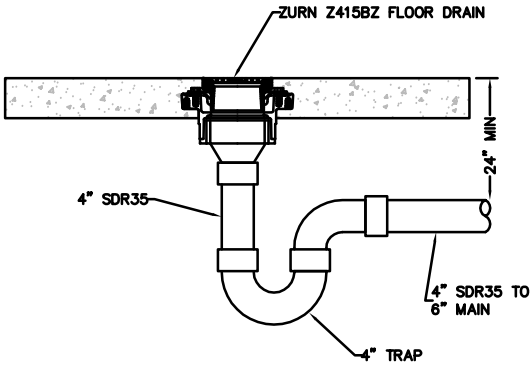
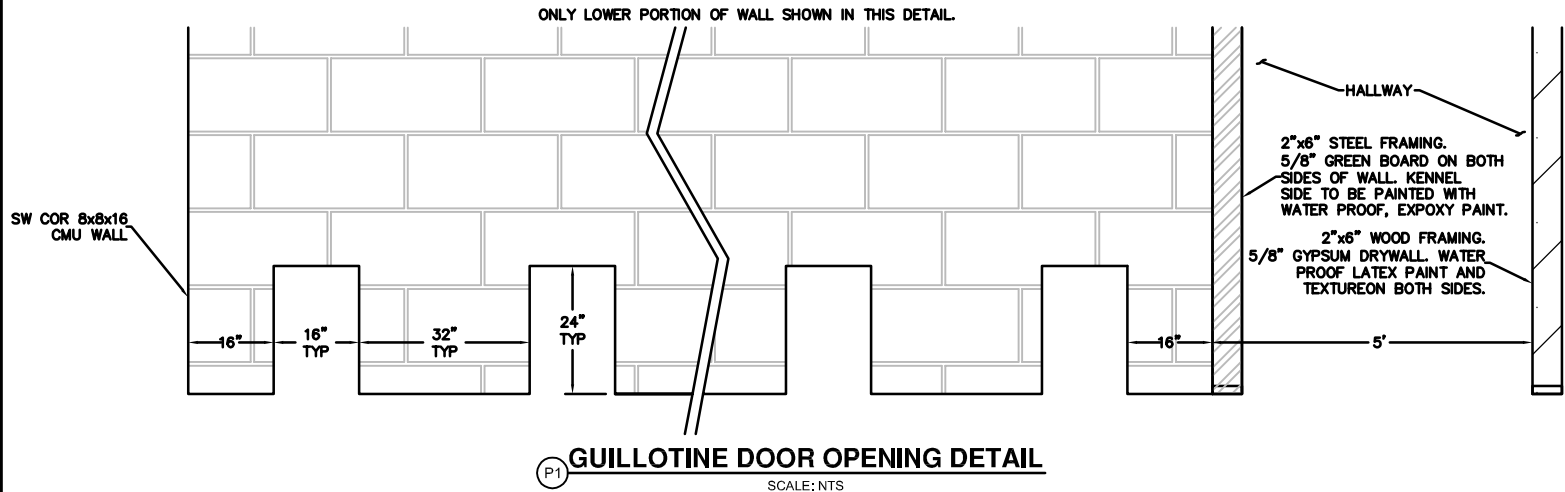
SHELTER DRAINAGE & PLUMBING NOTES

- P1 INSTALL KENNEL GUILLOTINE DOOR, MASON CO LARGE INSULATED KENL-DOOR (29"x17") OR APPROVED EQUAL PER MANUFACTURER'S RECOMMENDATIONS. ALL NECESSARY CABLING OR APURTENENCES FOR PROPER DOOR OPERATION FROM FRONT GATE OF KENNEL SHALL BE INCLUDED IN INSTALLATION.
- P2 INSTALL ZURN Z415BZ 6" COMMERCIAL FLOOR DRAIN, OR APPROVED EQUAL, AND TRAP PER DETAILS HEREON.
- P3 INSTALL 4" SDR35 SEWER LATERAL PIPE PER TYPICAL TRENCH DETAIL ON SHEET 10.
- P4 INSTALL 6" SDR35 SEWER MAIN PIPE PER TYPICAL TRENCH DETAIL ON SHEET 10.
- P5 INSTALL STA-RITE HPS10D 250 PSI MIN BOOSTER PUMP, OR APPROVED EQUAL, UNDER UTILITY SINK. 3/4" INLET AND OUTLET.
- P6 INSTALL 3/4" GALVANIZED WATER PIPE FOR HIGH PRESSURE KENNEL CLEANING SYSTEM.
- P7 INSTALL 3/4" QUICK CONNECT COUPLER.
- P8 INSTALL 3/4" PEX HOT AND COLD WATER PIPES.
- P9 INSTALL STAINLESS STEEL COUNTER AND/OR DUAL SINK.
- P10 INSTALL REGENCY 600S22323 OR APPROVED EQUAL INDUSTRIAL, STAINLESS, DUAL UTILITY SINK.
- P11 INSTALL DIRECT ANIMAL PRODUCTS SWIVEL RAMP 800-10 STAINLESS GROOMING TUB OR APPROVED EQUAL.
- P12 INSTALL 50 GALLON LPG WATER HEATER.
- P13 INSTALL 22 GALLON UTILITY SINK.
- P14 INSTALL 22"x60" 18 GA STAINLESS TOP, 4 DRAWER, EXAM TABLE. OMNI KNEE SPACE MODEL 203-60RE OR APPROVED EQUAL.
- P15 INSTALL SEWER CLEAN OUT PER DETAIL ON SHEET 2.
- P16 INSTALL 1/2 HP GARBAGE DISPOSAL IN-SINK-ERATOR BADGER 5 OR APPROVED EQUAL.



SHELTER DRAINAGE & PLUMBING PLAN

SCALE: 1/4"=1'



Plans Prepared by: <b>INYO COUNTY PUBLIC WORKS</b> 168 N. Edwards, P.O. Drawer Q Independence, CA 93526 (760) 878-0201				<b>COUNTY OF INYO ANIMAL SHELTER PROJECT</b> 1001 COUNTY ROAD, BIG PINE, CA			
Date: 5/12/14		SHELTER DRAINAGE & PLUMBING PLAN		Drawing Name: ANIMAL SHELTER 2013.dwg		SHEET <u>6</u> OF <u>9</u>	
Project Engineer: JTATUM	Checked By: JAHLSTROM	Date: MAY 2014	Designed by: JEROPKIN	Drawn by: JEROPKIN	Date: MAY 2014		

FOR REDUCED PLANS  
ORIGINAL SCALE IS IN INCHES

0 1 2 3 4

Revised By:  
Date:

Project Engineer:  
JTATUM

Checked By:  
JAHLSTROM

Date:  
MAY 2014

Designed by:  
JEROPKIN

Drawn by:  
JEROPKIN

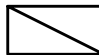

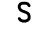
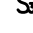





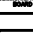




Date:  
MAY 2014

Drawing Name:  
ANIMAL SHELTER 2013.dwg

SHEET 6 OF 9

7:\P\AN\Animal Shelter\ANIMAL SHELTER 2013.dwg ANIMAL SHELTER 2013.dwg

## ELECTRICAL & HVAC LEGEND

-  2' x 4' FLOURESCENT LIGHT FIXTURE
-  RESTROOM EXHAUST FAN
-  SINGLE SWITCH
-  3-WAY SWITCH
-  20A, 120V, RECEPTACLE OUTLET
-  60A, 220V, SINGLE PHASE RECEPTACLE OUTLET
-  EXTERIOR LIGHT
-  PHONE & DATA JACK
-  200A BREAKER PANEL
-  COMMUNICATIONS BOARD
-  ROOF MOUNT, 3,000 CFM, 1/3 HP, EVAPORATIVE COOLER
-  HVAC UNIT
-  CEILING MOUNT HEATING UNIT, 20,000 BTU
-  HVAC VENT

## HVAC NOTES

- (H1) INSTALL INSULATED AND FLEXIBLE DUCTING. CONTRACTOR SHALL DETERMINE ALL DUCT SIZES, LOCATIONS AND ATTACHMENTS FOR ALL HEATING AND COOLING DUCTWORK (BASED ON EQUIPMENT AIR FLOWS) AND SHALL SUBMIT LAYOUT SKETCHES AND CUT SHEETS TO COUNTY ENGINEER FOR APPROVAL PRIOR TO INSTALLATION. ALL WORK SHALL BE INSTALL PER APPLICABLE BUILDING CODE REQUIREMENTS.
- (H2) INSTALL CEILING MOUNT VENT. CONTRACTOR SHALL DETERMINE SIZES, TYPES, AND ROOM LOCATIONS FOR CEILING MOUNT SUPPLY AND RETURN VENTS AND DUCTWORK AND SHALL SUBMIT LAYOUT SKETCHES AND CUT SHEETS TO COUNTY ENGINEER FOR APPROVAL PRIOR TO INSTALLATION.
- (H3) INSTALL OFFICE THERMOSTAT.
- (H4) INSTALL 5 TON COOLING, 60,000 BTU HEATING HVAC UNIT, CARRIER 48VL-A PERFORMANCE SERIES OR APPROVED EQUAL.
- (H5) INSTALL ROOF MOUNT, 3,000 CFM, 1/3 HP EVAPORATIVE COOLER AND PLENUM.
- (H6) INSTALL 20,000 BTU CEILING MOUNT HEATING UNIT. XXX OR APPROVED EQUAL.
- (H7) INSTALL KENNEL COOLER AND HEATER CONTROLLERS AND THERMOSTAT.

## ELECTRICAL & HVAC PLAN

SCALE: 1/4"=1'

### NOTES:

- LOCATIONS OF OUTLETS, LIGHTS, SWITCHES, DATA JACKS, AND VENTS ARE APPROXIMATE. FINAL LOCATIONS TO BE DETERMINED BY THE ENGINEER AND/OR ANIMAL SHELTER STAFF.
- ALL RECEPTACLES LOCATED IN KENNEL AREA TO HAVE GFI PROTECTION AND TO BE HOUSED WITH WATERPROOF COVERS.

Plans Prepared by:

INYO COUNTY  
PUBLIC WORKS

168 N. Edwards, P.O. Drawer Q  
Independence, CA 93526  
(760) 878-0201

COUNTY OF INYO  
ANIMAL SHELTER PROJECT  
1001 COUNTY ROAD, BIG PINE, CA

Date:  
5/12/14

ELECTRICAL & HVAC PLAN

FOR REDUCED PLANS  
ORIGINAL SCALE IS IN INCHES

0 1 2 3 4

Revised By:  
Date:

Project Engineer:  
JTATUM

Checked By: JAHSTROM  
Date: MAY 2014

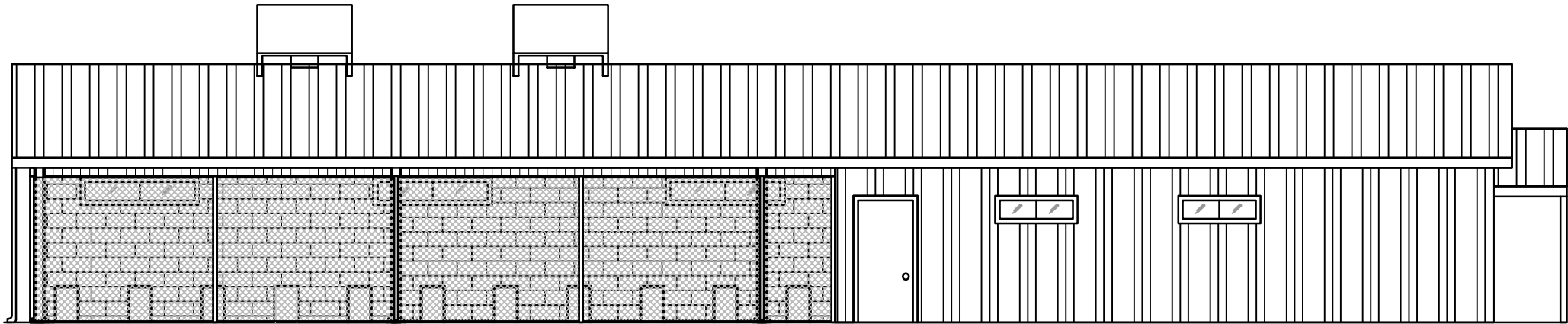
Designed by:  
JJEROPKIN

Drawn by: JJEROPKIN  
Date: MAY 2014

Drawing Name:  
ANIMAL SHELTER 2013.dwg

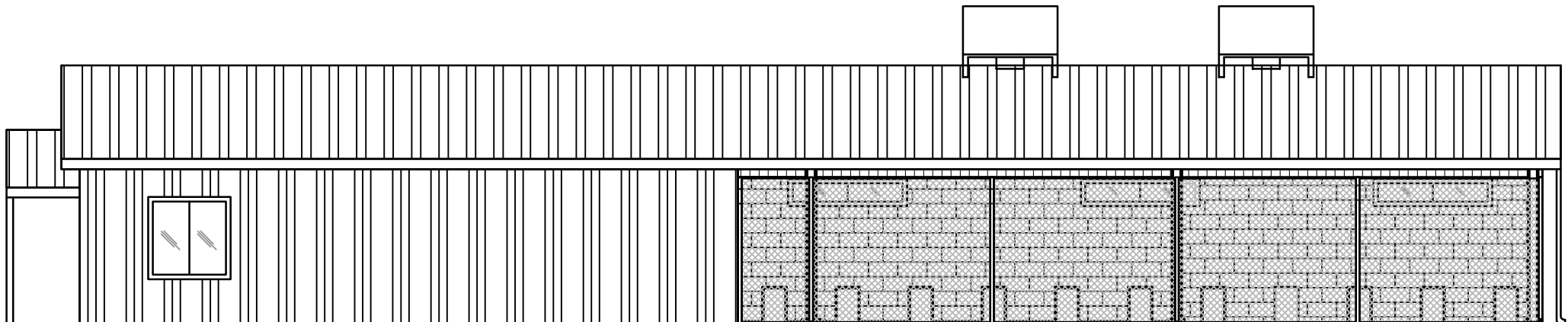
SHEET 7 OF 9

Z:\P\AN\Originals\Drawings\ANIMAL SHELTER 2013.dwg ANIMAL SHELTER 2013.dwg



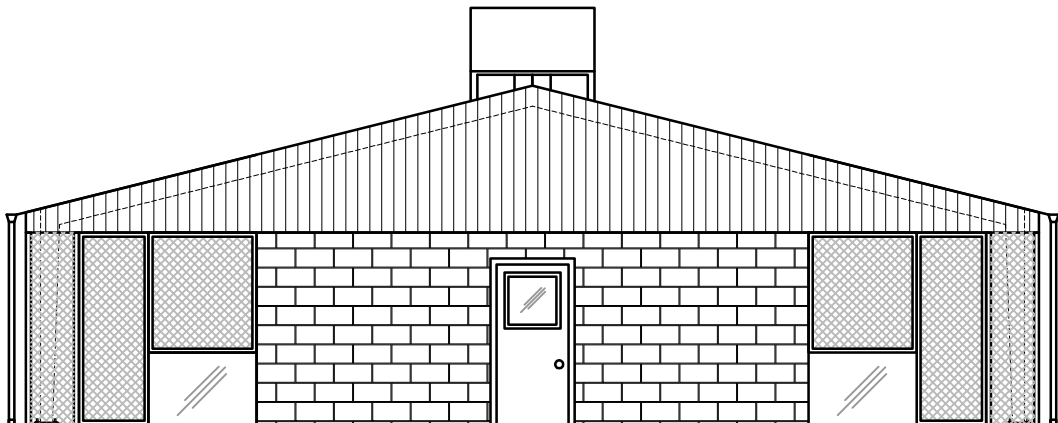
**SOUTH ELEVATION**

SCALE: 1/4"=1'



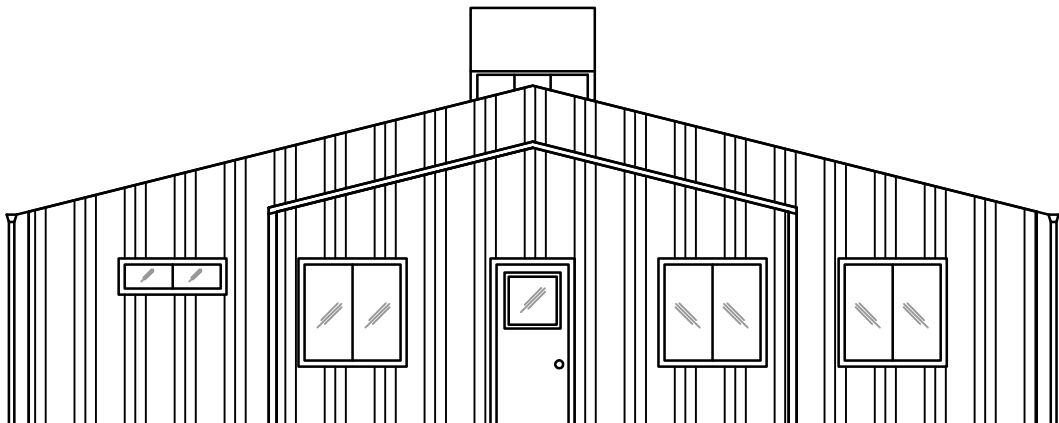
**NORTH ELEVATION**

SCALE: 1/4"=1'



**WEST ELEVATION**

SCALE: 1/4"=1'



**EAST ELEVATION**

SCALE: 1/4"=1'

Plans Prepared by:

**INYO COUNTY  
PUBLIC WORKS**

168 N. Edwards, P.O. Drawer Q  
Independence, CA 93526  
(760) 878-0201

**COUNTY OF INYO  
ANIMAL SHELTER PROJECT  
1001 COUNTY ROAD, BIG PINE, CA**

Date:

5/12/14

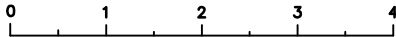
ELEVATIONS

Drawing Name:

ANIMAL SHELTER 2013.dwg

SHEET 8 OF 9

FOR REDUCED PLANS  
ORIGINAL SCALE IS IN INCHES



Revised By:

Date:

Project Engineer:

JTATUM

Checked By:

JAHLSTROM

Date:

MAY 2014

Designed by:

JJEROPKIN

Drawn by:

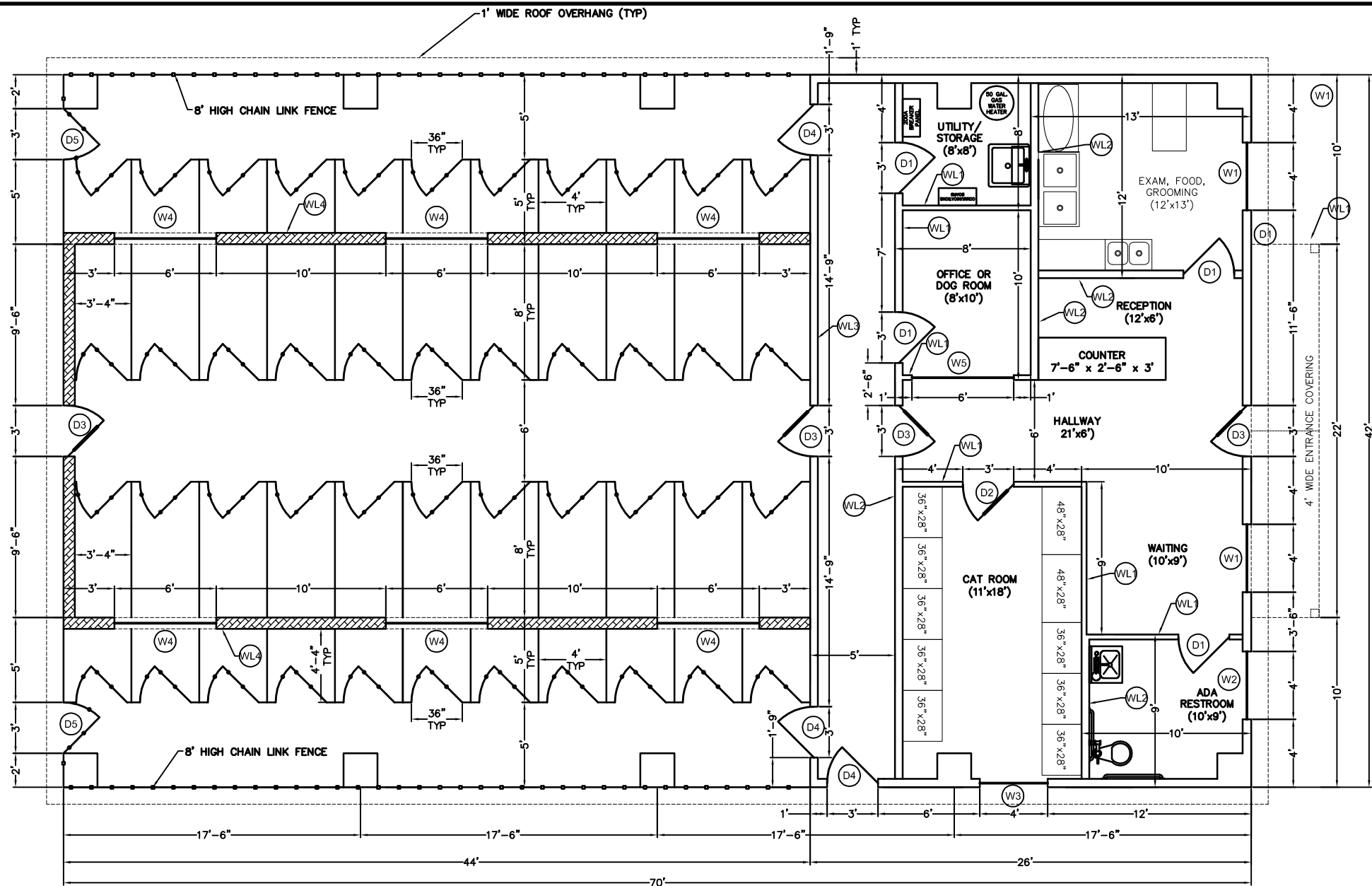
JJEROPKIN

Date:

MAY 2014



7/1/13 Original Drawing 10/1/13 ANIMAL SHELTER 10/1/13 ANIMAL SHELTER 10/1/13



ANIMAL SHELTER DEDUCTIVE BID ITEM FLOOR PLAN

SCALE: 1/4"=1'

## WALL SCHEDULE

- W1 2"x4" WOOD STUD FRAMING
- W2 2"x6" WOOD STUD FRAMING
- W3 2"x6" STEEL STUD FRAMING
- W4 8' TALL 8"x8"x16" CMU WALL WITH 2"x6" STEEL STUD FRAMING TO ROOF.

## DOOR SCHEDULE

- D1 3'-0" x 6'-8" INTERIOR (NON-RATED)
- D2 3'-0" x 6'-8" INTERIOR WITH 2'x2' WINDOW (NON-RATED)
- D3 3'-0" x 6'-8" EXTERIOR METAL DOOR - 20 GA. LIGHT COMMERCIAL DUTY, HOLLOW METAL TYPE WITH METAL JAMBS, SMOKE SEALS, INSULATED, WITH 2'x2' WINDOW AND INTERNAL BLIND SYSTEM
- D4 3'-0" x 6'-8" EXTERIOR METAL DOOR - 20 GA. LIGHT COMMERCIAL DUTY, HOLLOW METAL TYPE WITH METAL JAMBS, INSULATED.
- D5 3'-0" x 6'-0" CHAIN LINK GATE.
- D6 32" INTERIOR CLOSET DOOR (NON-RATED)

## WINDOW SCHEDULE

- W1 48" x 48" DOUBLE PAINED SINGLE SLIDER
- W2 48" x 12" DOUBLE PAINED SINGLE SLIDER PRIVACY FROSTED
- W3 48" x 12" DOUBLE PAINED SINGLE SLIDER
- W4 72" x 12" DOUBLE PAINED CASEMENT WINDOW WITH OPENING RODS
- W5 72" x 48" SHATTERPROOF, INTERIOR VIEWING WINDOW.

## BUILDING NOTES

- ALL BUILDING AND ANIMAL CAGE NOTES ON SHEET 5 APPLY TO THIS SHEET AS WELL AS THE CMU WALL DETAIL.
- PLUMBING, ELECTRICAL, HVAC AND SHELTER DRAINAGE PLANS WILL BE SIMILAR TO SHEET 5. THE COUNTY WILL FURNISH THESE PLANS IF DEDUCTIVE BID ITEM IS CHOSEN AS THE AWARDED BID.

Plans Prepared by: <b>INYO COUNTY PUBLIC WORKS</b> 168 N. Edwards, P.O. Drawer Q Independence, CA 93526 (760) 878-0201				<b>COUNTY OF INYO ANIMAL SHELTER PROJECT</b> 1001 COUNTY ROAD, BIG PINE, CA			
Date: 5/12/14		DEDUCTIVE BID ITEM FLOOR PLAN		Drawing Name: ANIMAL SHELTER 2013.dwg		SHEET <u>9</u> OF <u>9</u>	

FOR REDUCED PLANS  
ORIGINAL SCALE IS IN INCHES

0 1 2 3 4

Revised By:

Date:

Project Engineer:  
JTATUM

Checked By:  
JAHLSTROM

Date:  
MAY 2014

Designed by:  
JEROPKIN

Drawn by:  
JEROPKIN

Date:  
MAY 2014